

The World Goes Pop At The Tate (PHOTOS)

Tate Modern has gathered 160 amazing examples of global pop art for their new show *The EY Exhibition: The World Goes Pop*.

The Daily Beast

09.19.15 12:00 AM ET



Bernard Rancillac

Pilules capsules conciliabules, 1966 by Bernard Rancillac

In the 1960s and '70s, the whole world went Pop but many of our most familiar images from this period, the Warhols and Lichtensteins and the like, are Western-centric. In reality, the movement was much larger, resonating from Asia to Africa to South America, and these often-overlooked pieces are important, offering a fascinating, critical POV on modern commercialism. Tate Modern has brought together 160 of them

together, showcasing artists spanning the globe, celebrating how different cultures reacted to Pop in their new show *The EY Exhibition: The World Goes Pop*. Here is *Les Hommes Rouges* 1968-9 by Henri Cueco





Cubes, 1968 by Teresa Burga



El realismo socialista y el Pop Art en el campo de batalla, 1969 by Equipo Crónica



Valentine, 1966 by Evelyne Axell



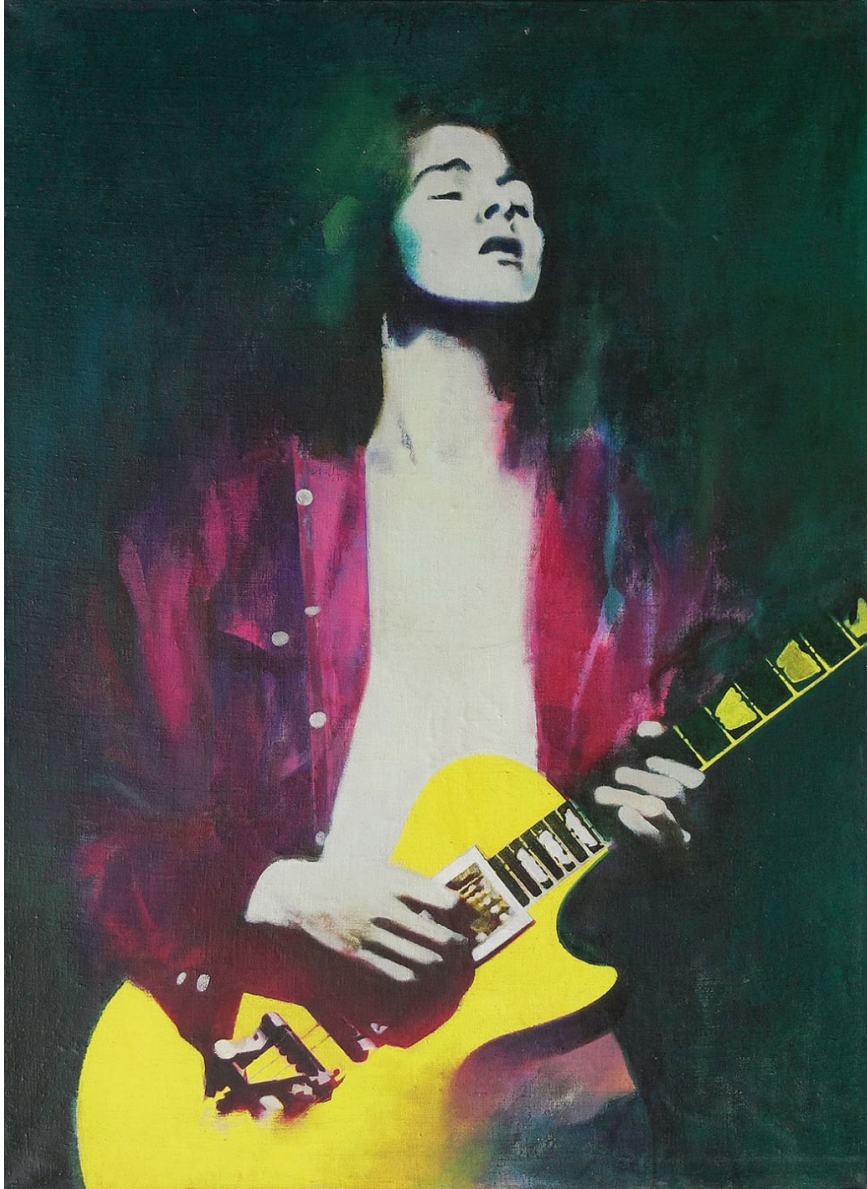
Atomic Kiss, 1968 by Joan Rabascall



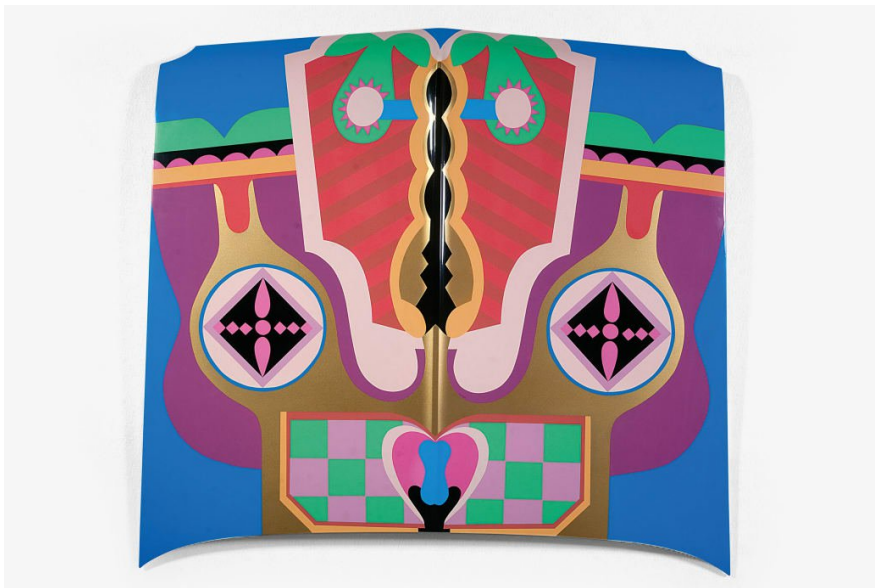
Fluorescent paint, oil, plastic board on plywood by Ushio Shinohara



American Interior #1 1968, by Ushio Shinohara



Guitarist, 1970 by Cornel Brudascu



Birth Hood, 1965-2011 by Judy Chicago



Bombs in Love, 1962 by Kiki Kogelnik



Corazón destrozado, 1964 by Delia Cancela



Bez Buntu (Without Rebellion), 1970 by Jerzy Ryszard "Jurry" Zielinski