

whitewall

Frieze Comes Back with a Bang in LA After a Pandemic Hiatus

By Pearl Fontaine
February 15, 2022

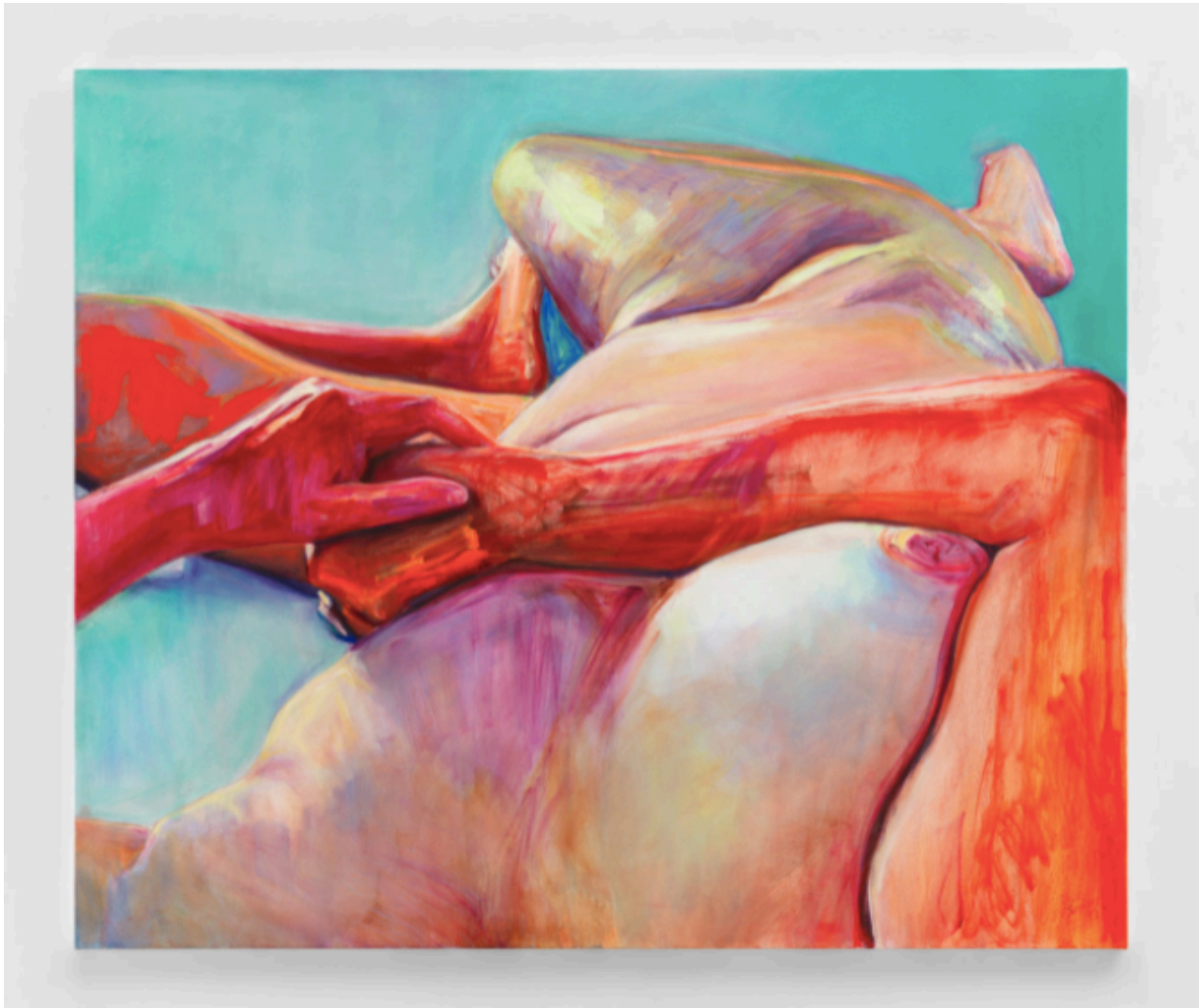


Betye Saar, "L.A. Energy," 1983, 5th Street between Flower Street and Grand Avenue; courtesy of the artist and Roberts Projects Los Angeles, California.

Frieze art fair returns to Los Angeles in-person this week after a pandemic hiatus, inaugurating a new location at 9900 Wilshire Boulevard in Beverly Hills. Under the directorship of **Christine Messineo**, the third edition of the Los Angeles fair takes place from February 17—20, welcoming 100 galleries from 17 countries across a main

exhibition sector, Focus LA, and Frieze Projects, and is accessible through an online viewing room.

The main exhibition floor presents a series of solo, dual, and group shows, including highlights like **Gagosian's** U.S. debut of **Chris Burden's** *Dreamer's Folly*; **Issy Wood** and **Evelyn Taochen Wang's** look at the relationship between clothing and identity, presented by **Carlos/Ishikawa**; a show of **María Berrío** with **Victoria Miro**; **Massimo De Carlo's** presentation of work by **McArthur Binion** and **Brian Rochefort**; and **Roberts Projects** introducing a new iteration of the 1983 mural by **Betye Saar** *L.A. Energy*.



Joan Semmel, "Spaced Out," 2019, oil on canvas, 60 x 72 inches; courtesy of Alexander Gray Associates.

Throughout the Focus LA sector, are highlights from city's emerging galleries like **Charlie James Gallery** bringing work by **Patrick Martinez** and **Jay Lynn Gomez**; mixed media works, sculptures, and paintings by **Troy Lamarr Chew II** and **Melvino Garetti**, shown by **Parker Gallery**; and **Bel Ami** presenting the work of **Ben Sakoguchi**. The platform will include other local galleries like **In Lieu**, **Gattopardo**, **Luis De Jesus Los Angeles**, **Baert Gallery**, and **Garden**.

Part of Frieze Projects, fairgoers won't want to miss the collaboration with artist **Tanya Aguiñiga**, BIPOC Exchange. Located adjacent to the main fair inside of **The Beverly Hilton**, Aguiñiga has conceived a communal space highlighting the artist-led social impact projects of organizations like **Los Angeles Poverty Department**, **Classroom of Compassion**, and **People's Pottery Project**. The Frieze Projects sector also features large-scale installations seen throughout the fair, looking at issues like the nature and history of protest and the relationship between materiality and history, featuring names like **Beatriz Cortez**, **Woody De Othello**, **Alma Allen**, and **Isabel Yellin**.



Carmen Herrera, "Untitled," 2012, Acrylic and pencil on paper, 19.7 x 27.6 inches; courtesy of the artist and Lisson Gallery.

Over the weekend, attendees can also expect to find happenings like the award of the first Frieze Impact Prize to **Mary Baxter**, **Maria Gaspar**, and **Dread Scott**; presenting partner **Deutsche Bank's** Los Angeles Film Award and the Art:LIVE video series; and the debut of **Jillian Mayer's** immersive *Glass Room*, commissioned by cognac *maison* **Bisquit & Dubouché**.



Chris Burden, "Dreamer's Folly," 2010, Cast iron gazebos and lace fabric, 136 x 164 x 223 inches; © 2022 Chris Burden / licensed by The Chris Burden Estate and Artists Rights Society (ARS), New York, courtesy of Gagosian.